

**CRADLE
MOUNTAIN AND
DOVE LAKE**
Tasmanian World
Heritage Sites

**PANORAMIC
HOBART VIEWS**
Mount Wellington

8D Let's Go Tasmania & Melbourne



EXCLUSIVE

- 3 Natural Wonders - Mount Wellington, Cradle Mountain, and Dove Lake
- 2 Cultural Landmarks - Richmond Town and Port Arthur
- Wildlife Encounters



HIGHLIGHTS

- **Hobart:** Barilla Bay Oyster, Mount Wellington, Richmond, Port Arthur, Bonorong Wildlife Park
- **Cradle Mountain:** Lake St Clair National Park, Dove Lake
- **Launceston:** Grindelwald Swiss Village, Cataract Gorge Reserve



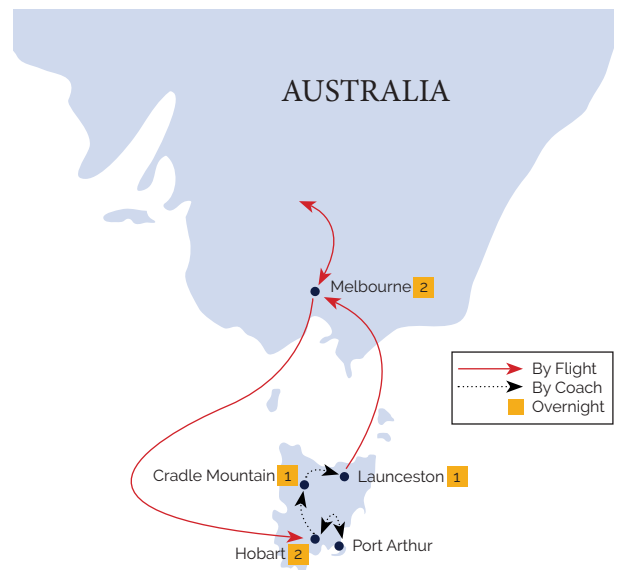
MEALS

- 6 Breakfast | 3 Lunch | 2 Dinner



ACCOMMODATIONS

- 4 Star Hotels



TASMANIA
COME DOWN FOR AIR





Melbourne

DAY 01

SINGAPORE > MELBOURNE

Meals on Board

- Assemble at the airport for your flight to **Melbourne**, Capital City of Victoria, Australia .

DAY 02

MELBOURNE > HOBART

Meals on Board | Lunch

- Thereafter, proceed to airport for flight to **Hobart** via Melbourne.
- Upon arrival in Hobart, visit **Barilla Bay Oyster**, a showcase of oyster and traditional Tasmanian ginger beer.
- Thereafter, proceed to **Mount Wellington**, the 21km drive to the summit passes through temperate rainforest to sub alpine flora and glacial rock formations, ending in panoramic view of Hobart.

DAY 03

HOBART - PORT ARTHUR - HOBART

Breakfast | Lunch

- In the morning, visit **Richmond**, a charming town northeast of Hobart in the coal river valley.
- Next, head to **Port Arthur** in Tasman Peninsula, Australia most intriguing historic site. Take a tour around the sprawling site for insights into the hardships endured by the convicts in the past. This will be followed by a harbour cruise where you can marvel at the historic buildings and ruins set amongst beautiful gardens.
- Visit the **Bonorong Wildlife Park**, where you can get to see all of the Australia animals such as Koalas, Kangaroo, wombats, Tasmanian Devils etc.

DAY 04

HOBART - CRADLE MOUNTAIN/GRINDELWALD

Breakfast | Lunch | Dinner

- Today, explore one of the **Tasmanian World Heritage Wilderness Area** and its jewel, the **Cradle Mountain, Lake St Clair National Park**.
- Immerse yourself in the picturesque landscape and abundance of wildlife.
- Then take a walk along **Dove Lake** on one of Tasmania most unspoiled walkway.

DAY 05

CRADLE MOUNTAIN/GRINDELWALD - LAUNCESTON

Breakfast | Dinner

- Today, begin with a visit to **Grindelwald Swiss Village**. The Village offers a unique sightseeing experience in Swiss style.
- Proceed on to the **Cataract Gorge Reserve** and walk on the historic suspension bridge over the **South Esk River** for the stunning views of the unique natural formation. Hop on to **Gorge Scenic Chairlift** (one way) built in 1972, the chairlift travels 457m over a massive river basin in a preserved natural area.
- Continue to **Launceston City Park**, the most beautiful park with beautiful flowers.

DAY 06

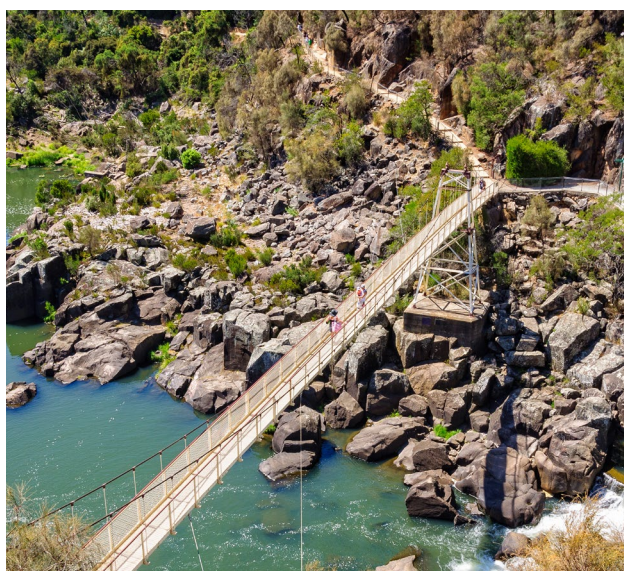
LAUNCESTON > MELBOURNE

Breakfast

- Today, enjoy some free at leisure time before transferring to the airport for the flight back to Melbourne.



Grindelwald Swiss Village



Cataract Gorge Reserve

DAY 07

MELBOURNE

Breakfast

- Today after breakfast, enjoy your free day at leisure in Melbourne.
- You may visit Direct Factory Outlets for a bout of shopping at more than 180 outlet retailers and well-known labels under one roof.

DAY 08

MELBOURNE > SINGAPORE

Breakfast | Meals on Board

- After breakfast, transfer to the airport for the flight back home.
- We hope you had a joyful vacation with LGE Travel and thank you for your support!

ADDITIONAL FEES (PRE PAY BEFORE DEPARTURE)

- Whole Trip Tipping

TOTAL AUD 150

REMARKS

1. Due to unforeseen circumstances, tour group may be merged and actual sequence of itinerary is subject to change with/without prior notice.
2. All flights are subject to change without prior notice.
3. During Australian Public Holidays, some attractions will either be closed or operate for only half a day.
4. During such occurrences, attractions such as theme parks may be combined into one day, and/or time spent at the attraction will be reduced.
5. Any deviation and/or extension from the scheduled tour itinerary is subject to airline's approval. If request for change is refused, passenger will have to return as per scheduled. If passenger opts to cancel, booking terms and conditions will apply.
6. Some hotels may not have housekeeping services on Sundays and Public Holidays. Rooms are based on run-of-house, allocated by respective hotels. LGE will not be responsible for this matter.
7. If the period of stay coincides with any events in Melbourne such as the
8. Australian Grand Prix or Ramadan period (24 Jul – 12 Aug), LGE reserves the right to find a hotel at the outskirts of the city to stay.
9. In the event of discrepancies between English and Chinese itineraries, the former prevails.
10. Passengers purchase optional excursions on their own expenditure and at their own risk; LGE will not be responsible. Therefore, travel insurance is recommended to ensure coverage.
11. A minimum group size of 10 passengers is required for a confirmed departure. Group size below 10 passengers will be solely be at the discretion of LGE Travel and passengers have to accept the arrangement.



Gorge Scenic Chairlift



Port Arthur



Dove Lake



L.G.E Travel
全球之星

*Let's
Go Europe™*

*Let's Go
Everywhere*

Our Tours



For Agent Use Only

CONTACT US

EUROPE & AMERICAS

 Tel : +65 6532 5322

 101 Upper Cross Street, People's Park Centre, B1-01A,
Singapore 058357

ASIA, EXOTIC, CHINA & EVERYWHERE

 Tel : +65 6255 8086

 101 Upper Cross Street, People's Park Centre, B1-09,
Singapore 058357