

**EXCITING  
SNOW  
ACTIVITIES**

Ski and play in  
the snow

**ARTE  
MUSEUM**

Digital art exhibits  
blending light,  
sound, and  
space

## 8D Let's Go Korea Winter Wonderland + Busan


**EXCLUSIVE**

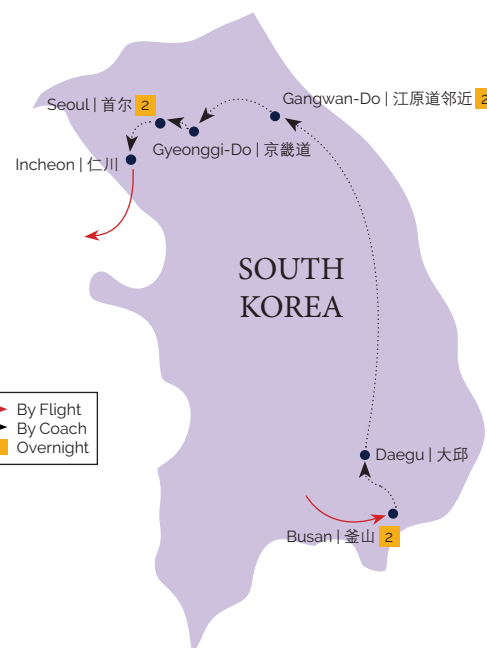
- Songdo Skywalk
- Arte Museum
- Gapyeong Sheep Farm
- Eobigyeok Valley (Marvel at a natural 25-meter ice wall glistening in winter)


**HIGHLIGHTS**

- **Busan:** Gamcheon Culture Village, Songdo Skywalk, Club Oasis Spa, Haeundae Blue Line Park, Busan X The Sky, Arte Museum, Gukje Market and BIFF Square, Jalgachi Fish Market
- **Daegu:** Daegu Palgongsan Cable Car, Daegu Hanok Starbucks Café
- **Gangwon-Do:** Ski Equipment & Attire
- **Gyeonggi-Do:** Fruit Picking Session (Seasonal), Gapyeong Sheep Farm, Eobigyeok Valley
- **Seoul:** Coex Starfield Library, Gyeongbokgung Palace with Hanbok, Gwangjang Market, Myeongdong, Hongik University Street, Korean Cosmetics Showroom, Korean Ginseng Showroom, Healthy Liver Showroom


**ACCOMMODATIONS**

- 4-star Hotels


**MEALS**

- 6 Breakfast | 5 Lunch | 5 Dinner





Songdo Skywalk | 松岛天空步道

#### DAY 01

### SINGAPORE > BUSAN

- Assemble at Singapore Changi Airport and begin your holiday with a pleasant flight to the capital city of Korea.

#### DAY 02

### BUSAN

*Meals on board | Puffer Fish Stew Lunch | Abalone Green Bean Stew Duck Dinner*

- **Gamcheon Culture Village** - Is a town within Gamcheon-dong, Saha District, Busan, South Korea. The area is known for its layered streets, twisted labyrinth-like alleys, and brightly painted houses, which have been restored and enhanced in recent years.
- **Songdo Skywalk** - ascend to the summit by cable car and see panoramic view of the Songdo seaside, Cloud Bridge, sparkling water, and rocky cliffs. From the 365-meter long over the blue ocean, you can enjoy the magnificent view around.
- **Club Oasis Spa** - Visit to the Korean bathhouse is a must-do cultural experience. Be like a local and learn all the proper etiquette here.

#### DAY 03

### BUSAN

*Hotel Breakfast | Busan Speciality Pork Lunch | Clams + Octopus Seafood Hot Pot Dinner*

- **Haeundae Blue Line Park (Capsule Train)** - Is a picturesque eco-friendly coastal attraction that was created by reforming an abandon closed railway. You can expect a slow smooth moment of enjoyment as you see the beautiful views.
- **Busan X The Sky** - An observatory deck which takes you from the 98th to 100th floors of the Landmark. You can enjoy the thrills of walking across SHOCKING BRIDGE, a transparent bridge high in the sky!
- **Arte Museum** - Is a global immersive media art exhibition that creates new exhibits in each region under the theme of 'Eternal Nature', spreading both domestically and internationally.
- **Gukje Market and BIFF Square** - that promotes the advancement of Korea's film industry, and also contributed to Busan's newly transformed district as an international cultural tourist city.
- **Jalgachi Fish Market** - It is the Korea's largest seafood market and its where you can see the lifestyle of the indigenous Busan natives.



Haeundae Blue Line Park | 海云台蓝线公园

#### DAY 04

### BUSAN - DAEGU - GANGWON-DO REGION

*Hotel Breakfast | Mushroom Steamboat + Pajeon Lunch | Gamjatang Dinner*

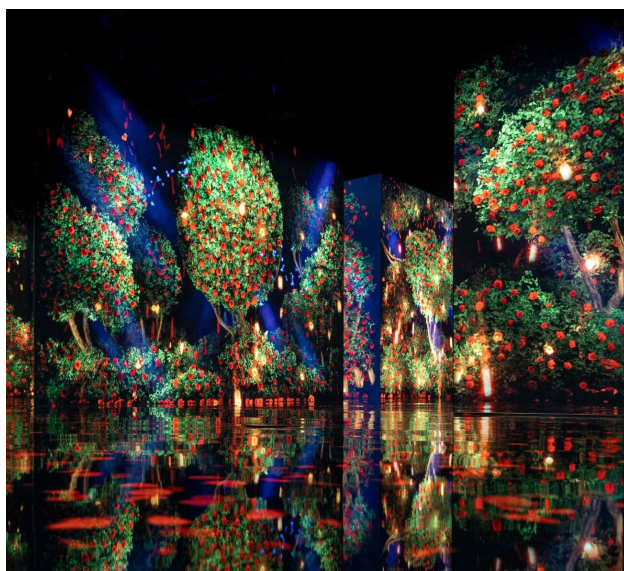
- **Daegu Palgongsan Cable Car** - Is a famous mountain in Daegu reaching heights of 1,192 meters. It was called with many different names during the Silla period.
- **Daegu Hanok Starbucks Café (FREE a cup of drink)** - You're in for a real treat! Starbucks Korea has just unveiled their brand-new outlet in Daegu, modelled after a gorgeous traditional Hanok with over 100 years of history!

#### DAY 05

### GANGWON-DO REGION

*Hotel Breakfast | Budae jjigae Dinner*

- **Snow Activities** - Today, a wondrous and exhilarating snow experience awaits. Do not miss out on this fabulous opportunity to try out skiing. Snow skiing equipment and attire are included (excludes gloves and goggles) and your guide will guide you through the finer points of this exciting winter sport. Take your time to master the strokes, or simply play with the snow. Thereafter, you will take the Gondola rides, enjoy a cup of coffee (own expenses) and indulge in the snowy view of the Mountain.



Arte Museum | 艺术博物馆



## DAY 06

### GANGWON-DO REGION - GYEONGGI-DO - SEOUL

*Hotel Breakfast | Chicken on hotplate Lunch | BBQ Korean Dinner*

- **Fruit Picking** – You can enjoy fruit picking of your favourite fruit depending on the season.
- **Gapyeong Sheep Farm** – A ranch where you have the chance to interact with the sheep.
- **Eobigyegok Valley** – Along a creek meandering through Eobi Park stands a 25-metre natural ice wall glistening with delicate ice crystals.
- **Coex Starfield Library** - One of the most interesting libraries in Seoul. The library is an open concept library that is lined up with 13m tall giant bookshelves filled with books.

## DAY 07

### SEOUL

*Hotel Breakfast | Ginseng Chicken Soup Michelin Recommended Lunch*

- **Gyeongbokgung Palace with Hanbok** - Take a walk around the palace built in AD 1394 during the Chosun Dynasty.
- **Ginseng Showroom** - which showcase various types of Korean ginseng that was inherited from the olden days. You can also purchase good quality ginseng at the showroom.
- **Local Cosmetic Shop** - Where Korea-manufactured beauty products are available at affordable prices.
- **Gwangjang Market** - Is one of the best places to go for original Korean street food in Seoul.
- **Myeongdong** - Shopping sensations in one of Seoul's main shopping and tourism districts.
- **\*Note : A levy of USD150 will be collected from each passenger who leaves the Seoul City tour group.**

## DAY 08

### SEOUL - INCHEON > SINGAPORE

*Hotel Breakfast*

- **Liver Showroom** - Well-known for its health products such as cordyceps and huganbao miracle tonic.
- **Hongik University Street** - A vibrant and youthful street. It is popular for music, street art, galleries, cafes, and fashionable shops.
- Bid farewell to this beautiful country before transferring to the airport for the flight home.

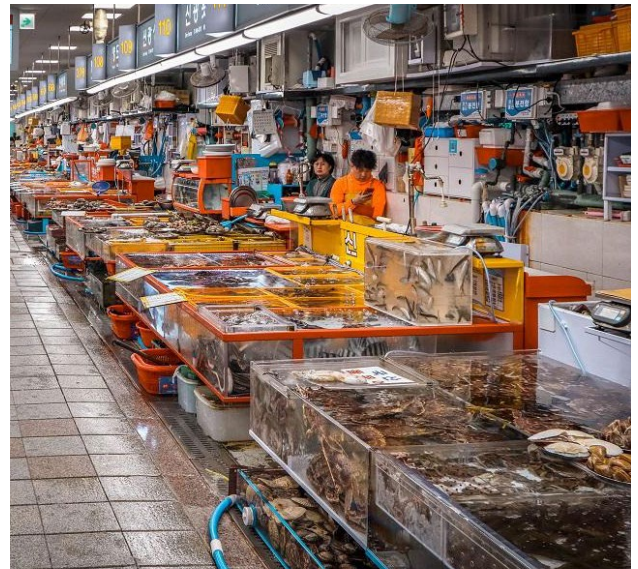
#### SERVICE FEE & ADDITIONAL EXCURSIONS

- Service Fee

| TOTAL USD 80

#### REMARKS

1. A minimum group size of 10 passengers is required for a confirmed departure. Group size of 09 and below will solely be at the discretion of LGE Travel and passengers need to accept the arrangement.
2. In the event of local religious festivals, unforeseen circumstances and/or bad weather conditions, the sequence of the itinerary, flight schedules, meals and hotels are subject to change without prior notice. Alternative attractions will be substituted without prior notice in order to ensure a smoother journey.
3. All hotel ratings are based on local standard. During major events, accommodation may be re-located to another city without prior notice.
4. In the event that a place of visit is fully booked or closed due to public engagement or bad weather conditions, it will be replaced with an alternative.
5. All guides are Chinese speaking, if a English guide is required, additional charges may applies.
6. Should there be any discrepancies over the English and Chinese Version of the Itinerary, we shall follow accordingly to the English Version.
7. We, as a Travel Agent shall not be held responsible in the event of a flight delay which can lead to disruptions in the itinerary.
8. Tour Fare does not Include All Airport Taxes, Fuel Surcharges, Visa Application Fees, Tipping, Porterage and all expenses of a Personal Nature.
9. For groups of 20 passengers and above, we will have a tour manager to accompany the tour throughout.



Jalgachi Fish Market | 鱼市场



Eobigyegok Valley | 鱼飞溪谷



Myeongdong | 明洞



## 8天 韩国冬天欢乐园 + 釜山



Snow Activities | 雪上活动

### 第一天

#### 新加坡 > 釜山

- 在新加坡樟宜机场集合，乘搭客机飞往韩国 - 釜山。

### 第二天

#### 釜山

机上用餐 | 河豚炖鱼午餐 | 鲍鱼绿豆炖鸭晚餐

- 甘川洞文化村** - 该地区以其分层的扭曲的迷宫般的小巷和色彩鲜艳的房屋而闻名。
- 松岛天空步道** - 乘缆车登上山顶，松岛海滨，云桥，波光粼粼的水面和岩石峭壁的全景尽收眼底。
- 汗蒸幕** - 参观韩国澡堂是必做的文化体验。

### 第三天

#### 釜山

饭店早餐 | 釜山猪肉风味午餐 | 蛤蜊+章鱼海鲜火锅晚餐

- 海云台蓝线公园（胶囊列车）** - 是一个风景如画的生态友好型沿海景点，是通过改造废弃的封闭铁路而创建的。
- 釜山 X 天空观景台** - 带您从地标的98层到100层。您可以享受穿越惊险刺激的高空透明桥！
- 艺术博物馆** - 是一场全球沉浸式媒体艺术展，以“永恒的自然”为主题，在各个地区创造新的展品，在国内外传播。
- 国际市场和BIFF国际电影广场** - 促进韩国电影产业的进步，也推动了釜山的新转换区为国际文化旅游城市。
- 鱼市场** - 这是韩国最大的海鲜市场，在这里您可以看到当地釜山土人的生活方式。

### 第四天

#### 釜山 - 大邱 - 江原道邻近区

饭店早餐 | 蘑菇火锅 + 煎饼午餐 | 马铃薯炖猪骨汤风味晚餐

- 大邱八公山缆车** - 是大邱的一座著名山峰，海拔1,192米。在新罗时期，它被命名为许多不同的名称。
- 大邱百年韩屋星巴克（赠送一杯饮料）** - 星巴克韩国刚刚在大邱推出了全新的分店，仿照拥有100多年历史的华丽传统韩屋！

### 第五天

#### 江原道邻近区

饭店早餐 | 韩式部队锅晚餐

- 雪上活动** - 令人振奋的滑雪体验。配套将含基本滑雪设备和服装(滑雪配套包括滑雪衣服与用具，不包含手套与护目镜)导师将引导您如何掌握各种滑雪的技巧。此后您也可乘坐缆车到山上享用咖啡(自费)赏雪景。

### 第六天

#### 江原道邻近区 - 京畿道 - 首尔

饭店早餐 | 铁板鸡午餐 | 韩式烧烤晚餐

- 水果采摘** - 您可以根据季节享受采摘您最喜欢的水果的乐趣。
- 加平郡羊农场** - 你所在的牧场有机会与羊互动。

- 鱼飞溪谷** - 沿着一条蜿蜒穿过鱼飞公园的小溪，矗立着一座25米长的天然冰墙，闪烁着精致的冰晶。
- 星图图书馆** - 首尔最有趣的图书馆之一。该图书馆是一个开放式概念图书馆，13m高的巨型书架上排列着满满的书籍。

### 第七天

#### 首尔

饭店早餐 | 人参鸡汤米其林推荐午餐

- 景福宫** - 建于1394年。体验试穿传统的韩国服装。
- 高丽人参展览厅** - 展示多种高丽参，继承独特种植方式，可购买优质人参。
- 韩国化妆品展示厅** - 学习如何护理皮肤，并以实惠的价格购买韩国制造的化妆品。
- 广藏市场** - 是在首尔品尝正宗韩国街头美食的最佳去处之一。
- 明洞** - 将到首尔主要的购物和旅游区之一消费。
- \*注意：所有参加韩国配套的旅客们不可在半途离团。导游将会向每一位自行离团的游客们索取美金150元的离团费用。**

### 第八天

#### 首尔 - 仁川 > 新加坡

饭店早餐

- 护肝宝专卖店** - 众所周知的保健产品如冬虫夏草和护肝宝奇迹补品。
- 弘益大学街** - 这里有音乐，街头艺术，画廊，咖啡馆和时尚商店非常受欢迎。
- 然后前往机场搭乘航班回家。

### 备注

- 确认出发的最少团体人数为 10 人。如团体少于09成员，全球之星将保留 决定权来操作或取消此行程，成员必须接受该安排。
- 行程次序或因宗教活动，未曾预见的气候状况而有所更动。如有任何更动，行程顺序、航班时刻表、酒店和膳食等，恕不另行通知。
- 所有的酒店评级均以当地为标准。重大活动期间，住宿可能会搬迁至其他城市，恕不另行通知。
- 如因公众参与或恶劣天气情况导致参观地点已满或关闭，将由其他地点替代。
- 所有导游均为中文导游，如需英文导游，可能会收取额外费用。
- 中英文版行程如有歧异，以英文版为准。
- 作为旅行社，我们对可能导致行程中断的航班延误不承担任何责任。
- 旅游票价不包括所有机场税、燃油附加费、签证申请费、小费、搬运费和所有个人费用。
- 如果团体超过20名乘客以上，将有1名新加坡领队随同团队出发。