

**DONGUIBOGAM VILLAGE**

First herbal medicine-themed park

HAEDONG YONGGUNGSŌ TEMPLE

A seaside temple built in 1376

8D Let's Go Korea Ulsan & Gyeongsangnam Explore Tour

**EXCLUSIVE**

- Hapcheon Film Park (A filming site for over 190 productions)
- Donguibogam Village
- Taehwagang National Garden

**ACCOMMODATIONS**

- 4-star Hotels

**HIGHLIGHTS**

- **Ulsan:** Taehwagang National Garden, Fe01 Upcycled Complex Cultural Space, Jangsaengpo Whale Cultural Village, Daewangam Park
- **Gyeongsangnam-Do:** Hapcheon Film Park, Donguibogam Village, Mureunggyo Bridge, Moxibustion Experience
- **Jeollanam-Do:** Nangdo Island, Yeosu Maritime Rail Bike, Yeosu Art Land, Dolsan Observatory
- **Busan:** Haeundae Blue Line Park, Busan X The Sky, Haedong Yonggungsa Temple, Coralani Cafe, Jukseong Cathedral, Songdo Skywalk, Jalgachi Fish Market, Gukje Market and BIFF Square, Gamcheon Culture Village, Arte Museum, Club Oasis Spa, Ginseng Showroom, Local Cosmetic Shop, Liver Showroom

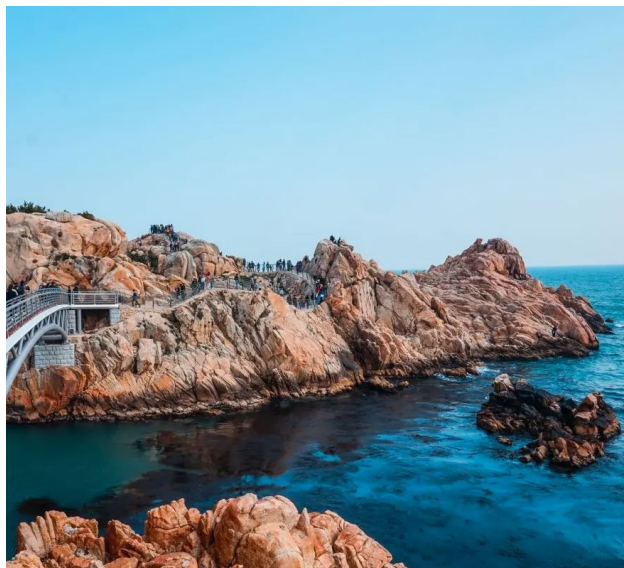
**MEALS**

- 6 Breakfast | 6 Lunch | 6 Dinner





Taehwagang National Garden | 太和江国家庭院



Daewangam Park | 大王岩公园



Hapcheon Film Park | 陝川影像主题公园

DAY 01

SINGAPORE > BUSAN

- Assemble at Singapore Changi Airport for your flight to the capital city of Korea.

DAY 02

BUSAN - ULSAN

Meals on board | Gamjatang Lunch | Korean BBQ Dinner

- **Taehwagang National Garden** - Is a bamboo forest that stretches over about 4 km along the Taehwagang River and is a natural garden using bamboo that has grown naturally.
- **Fe01 Upcycled Complex Cultural Space** - The element symbol for iron, 'Fe,' and eco-friendly artistic activities focused on upcycling (recycling) for the Earth's environment.
- **Jangsaengpo Whale Cultural Village** - Is a replica of the old Jangsaengpo whaling village, and visitors can explore parks with different themes and stories.
- **Daewangam Park** - The park spans over 150 acres and is known for its mesmerizing coastal scenery and lush greenery. It is a place where nature and history intertwine, giving you with an unforgettable experience.

DAY 03

ULSAN - GYEONGSANGNAM-DO - YEOSU

Hotel Breakfast | Wild Vegetable Bibimbap Set Lunch | Braised Spicy Chicken Dinner

- **Hapcheon Film Park** - Is filled with a unique atmosphere and things to see in every alley, and has been used as a filming location for over 190 dramas, movies, and music videos set in the 1920s to the 1980s.
- **Donguibogam Village** - Was established in 2005 and is the first herbal medicine-themed park in Korea.
- **Mureunggyo Bridge** - Is a suspension bridge where you can enjoy a stunning panoramic view of the lush, scenery landscape of Sancheong.
- **Moxibustion Experience** - You get to enjoy the unique experience of raising the body temperature and removing toxins from the body while improving your immunity.

DAY 04

YEosu REGION - BUSAN

Hotel Breakfast | Grilled Fish Set Lunch | Korean Soft Tofu Stew Dinner

- **Nangdo Island** - There is seaside rock on the coast where allow you to view the spectacular coastal scenery.
- **Yeosu Maritime Rail Bike** - Pedal along the stunning coastline, with a perfect blend of adventure and breathtaking scenery.
- **Yeosu Art Land** - Where wonderful sculptures to enjoy the harmony of various media art, art pieces and marine scenery.
- **Dolsan Observatory** - Is the highlight of the area, and offers panoramic views of Dadohae.

DAY 05

BUSAN

Hotel Breakfast | Puffer Fish Stew Lunch | Octopus and Clam Hot Pot + Noodles Dinner

- **Haeundae Blue Line Park (Capsule Train)** - Is a picturesque eco-friendly coastal attraction that was created by reforming an abandon closed railway. You can expect a slow smooth moment of enjoyment as you see the beautiful views.
- **Busan X The Sky** - An observatory deck which takes you from the 98th to 100th floors of the Landmark. You can enjoy the thrills of walking across "Shocking Bridge", a transparent bridge high in the sky!
- **Haedong Yonggungsa Temple** - Build in 1376 next to the seaside with a spectacular view.
- **Coralani Cafe** - Consists of four floors, and each one offers incredible panoramic views of the ocean. The cafe's interior is spacious, modern, and aesthetically pleasing, with large windows that let in ample natural light.

- **Jukseong Cathedral** - Located on the rocky shores of Korea's east coast. Witness a picturesque scenery of beautiful architecture paired with ocean views.

DAY 06

BUSAN

Hotel Breakfast | Busan Speciality Pork & Rice Set Lunch | Abalone Green Bean Duck Dinner

- **Ginseng Showroom** - which showcase various types of Koreans ginseng that was inherited from the olden days. You can also purchase good quality ginseng at the showroom.
- **Local Cosmetic Shop** - Where Korea-manufactured beauty products are available at affordable prices.
- **Songdo Skywalk** - Ascend to the summit by cable car and see panoramic view of the Songdo seaside, Cloud Bridge, sparkling water, and rocky cliffs. From the 365-meter long over the blue ocean, you can enjoy the magnificent view around.
- **Jalgachi Fish Market** - It is the Korea's largest seafood market and its where you can see the lifestyle of the indigenous Busan natives.
- **Gukje Market and BIFF Square** - That promotes the advancement of Korea's film industry, and also contributed to Busan's newly transformed district as an international cultural tourist city.

DAY 07

BUSAN

Hotel Breakfast | Budae jjigae Lunch | Long Crab Leg Set Dinner

- **Liver Showroom** - Well-known for its health products such as cordyceps and huginbao miracle tonic.
- **Gamcheon Culture Village** - It is a town within Gamcheon-dong, Saha District, Busan, South Korea. The area is known for its layered streets, twisted labyrinth-like alleys, and brightly painted houses, which have been restored and enhanced in recent years.
- **Arte Museum** - Is a global immersive media art exhibition that creates new exhibits in each region under the theme of 'Eternal Nature', spreading both domestically and internationally.
- **Club Oasis Spa** - Visit to the Korean bathhouse is a must-do cultural experience. Be like a local and learn all the proper etiquette here.
- ***Note : A levy of USD150 will be collected from each passenger who leaves the Seoul City tour group.**

DAY 08

BUSAN > SINGAPORE

Hotel Breakfast

- Bid farewell to this beautiful country before transferring to the airport for the flight home.

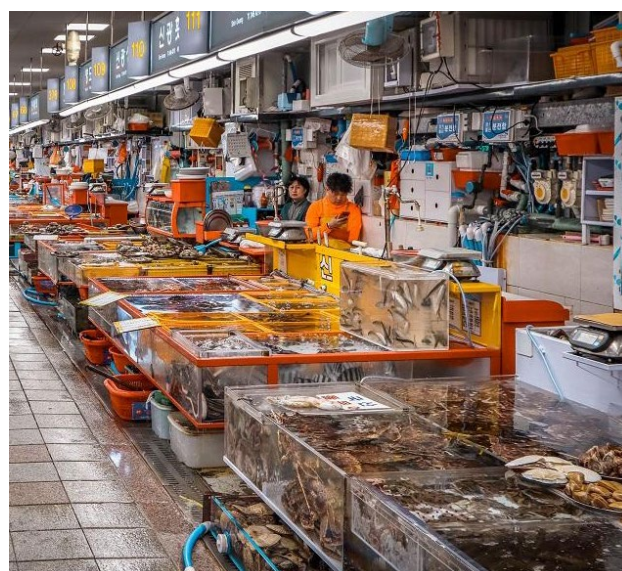
SERVICE FEE & ADDITIONAL EXCURSIONS

- Service Fee

TOTAL USD 80



Donguibogam Village | 东医宝鉴村



Jalgachi Fish Market | 鱼市场

REMARKS

1. A minimum group size of 10 passengers is required for a confirmed departure. Group size of 09 and below will solely be at the discretion of LGE Travel and passengers need to accept the arrangement.
2. In the event of local religious festivals, unforeseen circumstances and/or bad weather conditions, the sequence of the itinerary, flight schedules, meals and hotels are subject to change without prior notice. Alternative attractions will be substituted without prior notice in order to ensure a smoother journey.
3. All hotel ratings are based on local standard. During major events, accommodation may be re-located to another city without prior notice.
4. In the event that a place of visit is fully booked or closed due to public engagement or bad weather conditions, it will be replaced with an alternative.
5. All guides are Chinese speaking, if a English guide is required, additional charges may applies.
6. Should there be any discrepancies over the English and Chinese Version of the Itinerary, we shall follow accordingly to the English Version.
7. We, as a Travel Agent shall not be held responsible in the event of a flight delay which can lead to disruptions in the itinerary.
8. Tour Fare does not Include All Airport Taxes, Fuel Surcharges, Visa Application Fees, Tipping, Porterage and all expenses of a Personal Nature.
9. For groups of 20 passengers and above, we will have a tour manager to accompany the tour throughout.

8天 韩国，蔚山和庆尚南道探索游



Mureunggyo Bridge | 武陵桥

第一天

新加坡 > 釜山

- 在新加坡樟宜机场集合，乘搭客机飞往韩国 - 釜山。

第二天

釜山 - 蔚山

机上用餐 | 马铃薯炖猪骨汤风味午餐 | 韩式烧烤晚餐

- 太和江国家庭院** - 是一片绵延不断的竹林，太和江沿岸约4公里，是自然生长的竹林。
- Fe01 再生复合空间（钢铁艺术）** - 铁的元素符号“Fe”以及注重地球资源升级再造（回收）的环保艺术活动环境。
- 长生浦鲸鱼文化村** - 是旧长生浦捕鲸村的复制品，游客可以探索不同主题和故事的公园。
- 大王岩公园** - 该公园占地超过 150 英亩，以其迷人的海岸风光和郁郁葱葱的绿色植物。这是一个自然与历史交织在一起的地方，给您带来难忘的体验。

第三天

蔚山 - 庆尚南道 - 丽水

饭店早餐 | 野菜拌饭定食午餐 | 韩式嫩鸡晚餐

- 陕川影像主题公园** - 这里充满了独特的氛围，每条小巷都有特点，曾被用作 1920 年代至 80 年代，是 190 多部电视剧、电影和音乐录影带的拍摄地。
- 东医宝鉴村** - 成立于2005年，是韩国第一家草药主题公园。
- 武陵桥** - 是一座吊桥，在这里您可以欣赏到山清郁郁葱葱的风景。
- 艾灸治疗经验** - 您可以享受升高体温、排除体内毒素、同时提高免疫力的独特体验。

第四天

丽水 - 釜山

饭店早餐 | 青花鱼风味午餐 | 韩国豆腐晚餐

- 狼岛** - 海岸上有漂亮的岩石，可以观赏到壮观的海岸风光。
- 丽水海洋铁路自行车** - 沿着令人惊叹的海岸线骑行，体验冒险与令人惊叹的风景。
- 丽水艺术公园** - 欣赏各种媒体艺术、艺术品和海洋风景。
- 突山展望台** - 是该地区的亮点，可欣赏到很多海岛的全景。

第五天

釜山

饭店早餐 | 豚炖鱼午餐 | 什锦蛤蜊章鱼海鲜火锅 + 刀削面晚餐

- 海云台蓝线公园（胶囊列车）** - 是一个生态友好的沿海景点，通过改造废弃的封闭铁路而建立。
- 釜山 x 天空观景台** - 带您从98层到100层，体验高空透明桥的刺激！
- 海东龙宫寺** - 建于1376年，毗邻海边，享有壮观的景色。
- 海景咖啡厅** - 共有四层楼，每一层都可遥望海洋全景。咖啡馆内部宽敞、还设有大窗户，自然光线充足。
- 竹城圣堂（电影拍摄场地）** - 位于韩国东海岸的岩石海岸。见证美丽建筑与海景如画的风光。

第六天

釜山

饭店早餐 | 釜山猪肉风味午餐 | 鲍鱼绿豆炖鸭晚餐

- 高丽人参展览厅** - 它展示了各种类型的高丽参，独特的种植方式是从过去继承下来的。您也可以在展厅购买优质的人参。
- 韩国化妆品展示厅** - 学习如何护理皮肤，并以实惠的价格购买韩国制造的化妆品。
- 松岛天空步道** - 搭缆车登山，可俯瞰松岛海滨、云桥、波光粼粼的水面和陡峭的岩壁。
- 鱼市场** - 这是韩国最大的海鲜市场。
- 国际市场和BIFF国际电影广场** - 促进韩国电影产业的进步，也推动了釜山的新转换区为国际文化旅游城市。

第七天

釜山

饭店早餐 | 韩式部队锅午餐 | 长脚蟹套餐晚餐

- 护肝宝专卖店** - 众所周知的保健产品如冬虫夏草和护肝宝奇迹补品。
- 甘川洞文化村** - 该地区以其分层的扭曲的迷宫般的小巷和色彩鲜艳的房屋而闻名。
- 艺术博物馆** - 是一场全球沉浸式媒体艺术展，以“永恒的自然”为主题，在各个地区创造新的展品，在国内外传播。
- 汗蒸幕** - 参观韩国澡堂是必做的文化体验。
- *注意：所有参加韩国配套的旅客们不可在半途离团。导游将会向每一位自行离团的游客们索取美金150元的离团费用。**

第八天

釜山 > 新加坡

饭店早餐

- 然后前往机场搭乘航班回家。

备注

- 确认出发的最少团体人数为 10 人。如团体少于09成员，全球之星将保留 决定权来操作或取消此行程，成员必须接受该安排。
- 行程次序或因宗教活动，未曾预见的气候状况而有所更动。如有任何更动，行程顺序、航班时刻表、酒店和膳食等，恕不另行通知。
- 所有的酒店评级均以当地为标准。重大活动期间，住宿可能会搬迁至其他城市，恕不另行通知。
- 如因公众参与或恶劣天气情况导致参观地点已满或关闭，将由其他地点替代。
- 所有导游均为中文导游，如需英文导游，可能会收取额外费用。
- 中英文版行程如有歧异，以英文版为准。
- 作为旅行社，我们对可能导致行程中断的航班延误不承担任何责任。
- 旅游票价不包括所有机场税、燃油附加费、签证申请费、小费、搬运费和所有个人费用。
- 如果团体超过20名乘客以上，将有1名新加坡领队随同团队出发。